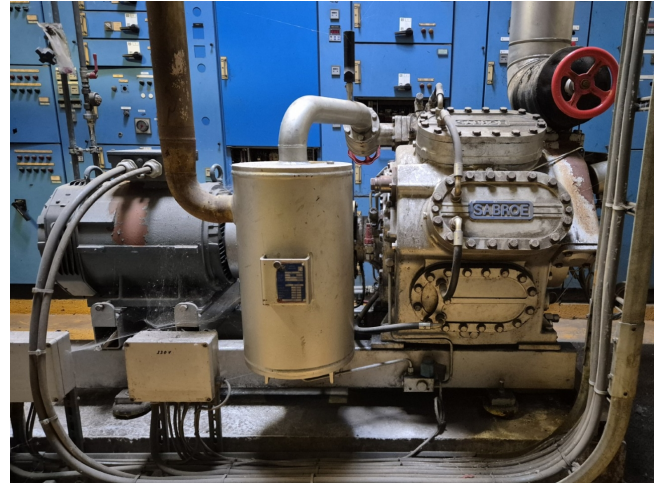


Sabroe SMC 108 L

Specifications

Marka	Sabroe
Typ	SMC 108 L
Czynnik chłodzący	NH 3 (ammonia)
kW at +10°C/+40°C	722,4*
kW at 0°C/+40°C	477,8*
kW at -5°C/+40°C	380,2*
kW at -10°C/+40°C	297,1*
Silnik elektryczny Specs	50/60 Hz - 37/42,5 kW - 1460/1760 RPM
Rozładunek	✓
Kontrolka wydajności	✓
Podstawa na stalowej ramie	✓
Ciśnieniowe przełączniki bezpieczeństwa	✓
Wskaźniki ciśnienia	✓
Separator oleju	✓
Okno widokowe	✓
m ³ / h	565
Uwagi	Y.o.b. 2001
Uwagi	*Capacity based on a bigger electric motor
Stock	1



Description

Used Sabroe SMC 108 L

Used Sabroe SMC 108 L reciprocating compressor on R717 (Ammonia). Complete with a Schorch KN7200M-BB01B-401 electric motor - 50/60 Hz - 37/42,5 kW - 1460/1760 RPM, oil separator, pressure and safety switches/gauges. The compressor has a displacement of 565 m³/h. *Capacity based on a bigger electric motor.

*Why choose for HOSBV? We're not only the largest used refrigeration specialist in Europe, but also, we deliver all equipment including an extensive test, warranty and industrial cleaning.

*Optional we can also perform a new paint job and arrange the logistics.

